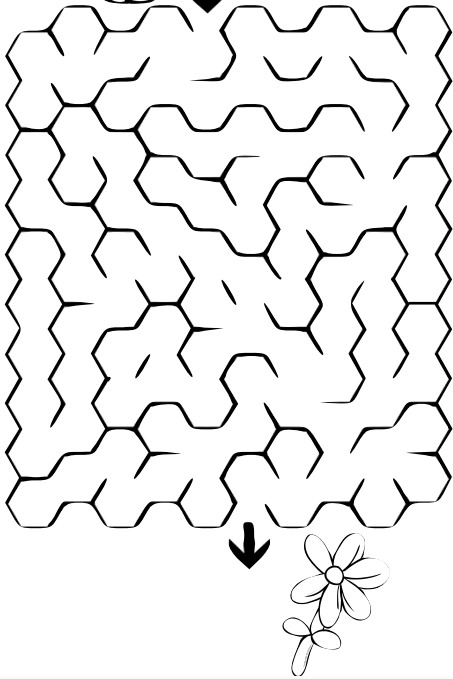


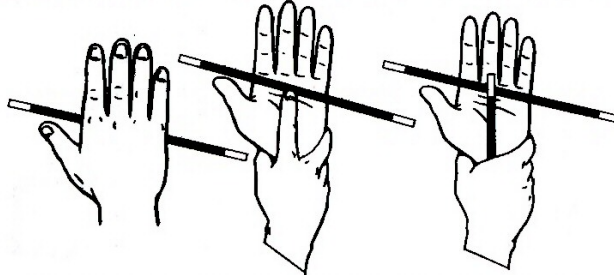
# MAGICAL STORIES AND MORE

## FUN GAMES AND PUZZLES



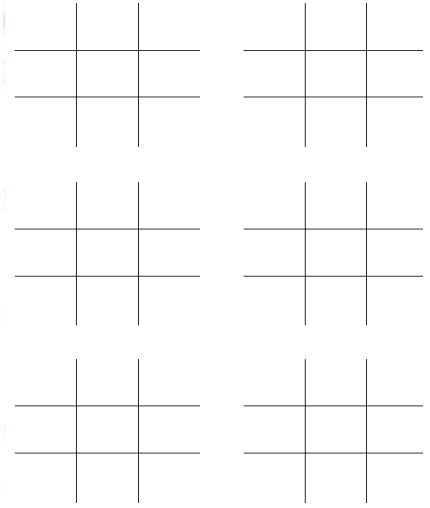
### MAGNETIC HAND

A MAGIC WAND OR PENCIL APPEARS TO BE MAGNETISED TO YOUR HAND AND HELD THERE BY STATIC ELECTRICITY.



HERE IS THE SECRET. PRESS YOUR INDEX FINGER AGAINST YOUR PALM TO KEEP THE WAND IN PLACE. TO REPEAT THE EFFECT AND MAKE IT EVEN MORE BAFFLING USE A SECOND WAND OR PENCIL TO HOLD THE FIRST ONE IN PLACE. YOU CAN ALSO TUCK THE EXTRA WAND INTO YOUR WATCH BAND IF YOU HAVE ONE.

### TIC TAC TOE

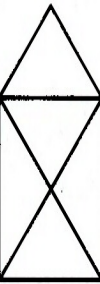


- CARAMEL
- CHOCOLATE
- GUM DROP
- HALYAH
- JELLY BEAN
- LEMON DROP
- LICORICE
- LOLLIPOP
- MARZIPAN
- NOUGAT
- PRALINE
- TAFFY
- TOFFEE
- TRUFFLE

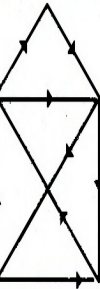


### THE MAGIC HOUSE

CAN YOU DRAW THE FIGURE OF A HOUSE LIKE THE ONE PICTURED TO THE RIGHT WITHOUT LIFTING YOUR PENCIL AND WITHOUT RETRACING ANY OF THE LINES?



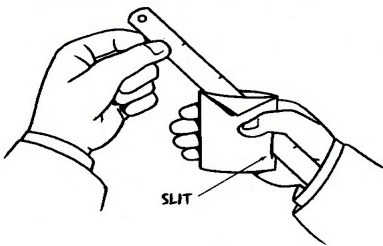
YOU CAN IF YOU FOLLOW THE PATH IN THE BOTTOM FIGURE. TRY IT YOURSELF FIRST BEFORE YOU STUDY THE BOTTOM DRAWING, THEN SEE HOW MANY OF YOUR FRIENDS CAN DO IT. IT IS A GREAT EXERCISE IN LOGIC AND CREATIVE THINKING.



P	C	I	N	M	A	R	Z	I	P	A	N	P
Z	Y	A	U	A	J	F	A	V	T	Y	O	P
U	F	V	R	X	E	V	R	O	R	R	O	Z
I	F	N	R	A	T	B	F	P	D	P	M	W
P	A	A	N	A	M	F	Y	M	I	E	L	C
O	T	V	G	V	E	E	U	L	T	L	H	H
R	T	U	P	E	T	G	L	I	L	O	M	E
D	O	P	R	Y	U	O	A	C	C	E	Q	L
N	J	H	A	V	L	A	H	O	C	I	J	F
O	E	V	L	V	K	Y	L	R	P	C	K	F
M	K	K	I	E	R	A	P	I	T	W	V	U
E	M	Y	N	C	T	K	V	C	L	Q	H	R
L	E	S	E	E	O	C	D	E	K	T	K	T

### ENVELOPE SURPRISE

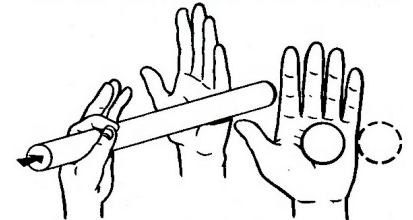
YOU PULL A RULER OUT FROM AN ENVELOPE THAT IS MUCH TOO SMALL TO HOLD IT.



SECRETLY PREPARE THE ENVELOPE WITH A SLIT IN ONE CORNER. THE RULER PASSES THROUGH THE SLIT AND IS HIDDEN IN YOUR SLEEVE. THE REST OF THE RULER IS IN THE ENVELOPE. TO MAKE THIS SEEM EVEN MORE IMPOSSIBLE LAY THE RULER ON TOP OF THE ENVELOPE TO EMPHASISE THAT IT COULD NOT POSSIBLY FIT INSIDE. JUST BE SURE TO KEEP THE SLIT HIDDEN FROM VIEW.

### HOLE IN THE HAND ILLUSION

LOOK AT AN OBJECT IN THE DISTANCE THROUGH A CARDBOARD PAPER TOWEL TUBE WITH YOUR RIGHT EYE. HOLD YOUR LEFT HAND IN FRONT OF YOUR LEFT EYE. YOU WILL SEE A HOLE IN YOUR LEFT HAND!



THIS ILLUSION IS CAUSED BY THE WAY YOUR EYES WORK. THE CONFUSION CAUSES YOUR BRAIN TO PROCESS THIS AS A HOLE IN YOUR HAND. THAT IS WHY IT IS CALLED AN OPTICAL ILLUSION.

**FOLLOW US  
ON  
FACEBOOK**

Visit Us At

[www.MagicalStoriesAndMore.com](http://www.MagicalStoriesAndMore.com)